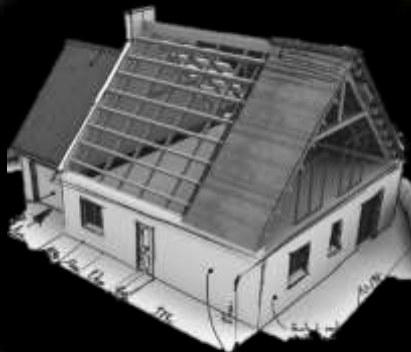


Indoors & Outdoor Innovative Lifestyle Solutions

October 2022



Who are we and what do we offer?

Based in Dublin, Marvin Flooring Ltd was set up back in 1995 and today is still a fully Irish owned and operated business. A lot has changed since the start of the company, who as the name suggests just supplied floor coverings. The company always strived to bring new products to market and back in 2015 when we reviewed our extensive product portfolio, it quickly became obviously that Marvin Flooring didn't convey our product ranges.

We set up two trading identities with different market focuses, however while they service different markets and customers, a lot of the products are still relevant for both sectors. Our aim was and is, to continue to bring new and innovative products to the market and to offer not just stand alone products, but to have an integrated approach, where we can normally offer a range of relevant products to any project or specific customer type.

***Designfx** offers a range of products favoured by Interior designers, architects, fit-out companies and bespoke furniture manufacturers. This range of products are mostly used in retail, hospitality and corporate projects, however they can of course be used for residential and commercial projects.*

***Garden and Homefx** on the other hand offers products generally to contractor or the end user for both indoors & outdoor applications. While these products are aimed at residential and commercial projects, it isn't hard to see how a lot of them easily cross over for retail, hospitality and corporate projects.*

Our warehouse is based in Rathcoole, Dublin just off the N7 where we also have a small showroom with the vast majority of the products are available to be seen either in full or as samples.

As we are only a small company, I would ask you contact me by email or mobile in advance of your proposed visiting, just to make sure I will be here to help you.

I very much welcome all feedback and would appreciate your thoughts on any new product suggestions you think may be of interest to our business.

Derek Morrin
+353 85 8564689

For more information on our products, or to arrange a visit contact us at;

www.designfx.ie Email: contact@designfx.ie
www.gardenandhomefx.ie Email: contact@gardenfx.ie

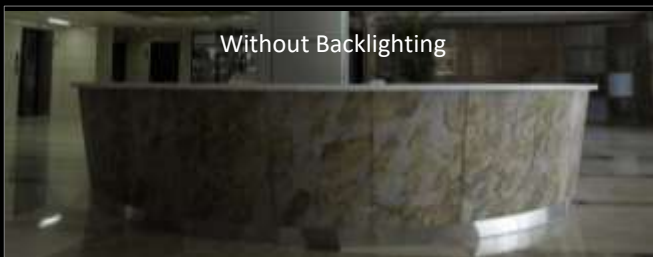
designfx 

garden
and **homefx**

Slate-lite is an extra thin layer of natural stone on a stabilizing backing. Their unique process enables them to gain up to 300 sheets out of a 50mm block of natural stone. Not only is this cost effective, it also allows them to conserve a precious natural resource. Due to its light final weight nature, it is also economic to transport giving it a low carbon footprint, allowing it to proudly offer a green and eco-friendly product.



Available in 4 ranges, Classic (40 colour options), Translucent (23 colour options) ultra flexible Eco Stone & Eco Stone Translucent, we have the perfect product and colour for every indoor & outdoor application.



Typical Applications

- Wall Coverings, Fireplace Surrounds
- Bathrooms & Wet-Areas
- Kitchen, Doors & Furniture
- Floor & Ceiling Coverings
- Interior & Exteriors Claddings

Translucent Colour Range (shown back lit with a warm light)



Slate



Tan



Falling Leaves



Terra Rosso



Molto Rosa



California Gold



Rustiue



Acrobaleno Colore



Acrobaleno Gris



Negro



Myca



Cobra



Burning Forest



Auro



Argento Auro



Argento



Silver Grey



Mare



Verde



Galaxy Black



D.Black



Rainforest Brown



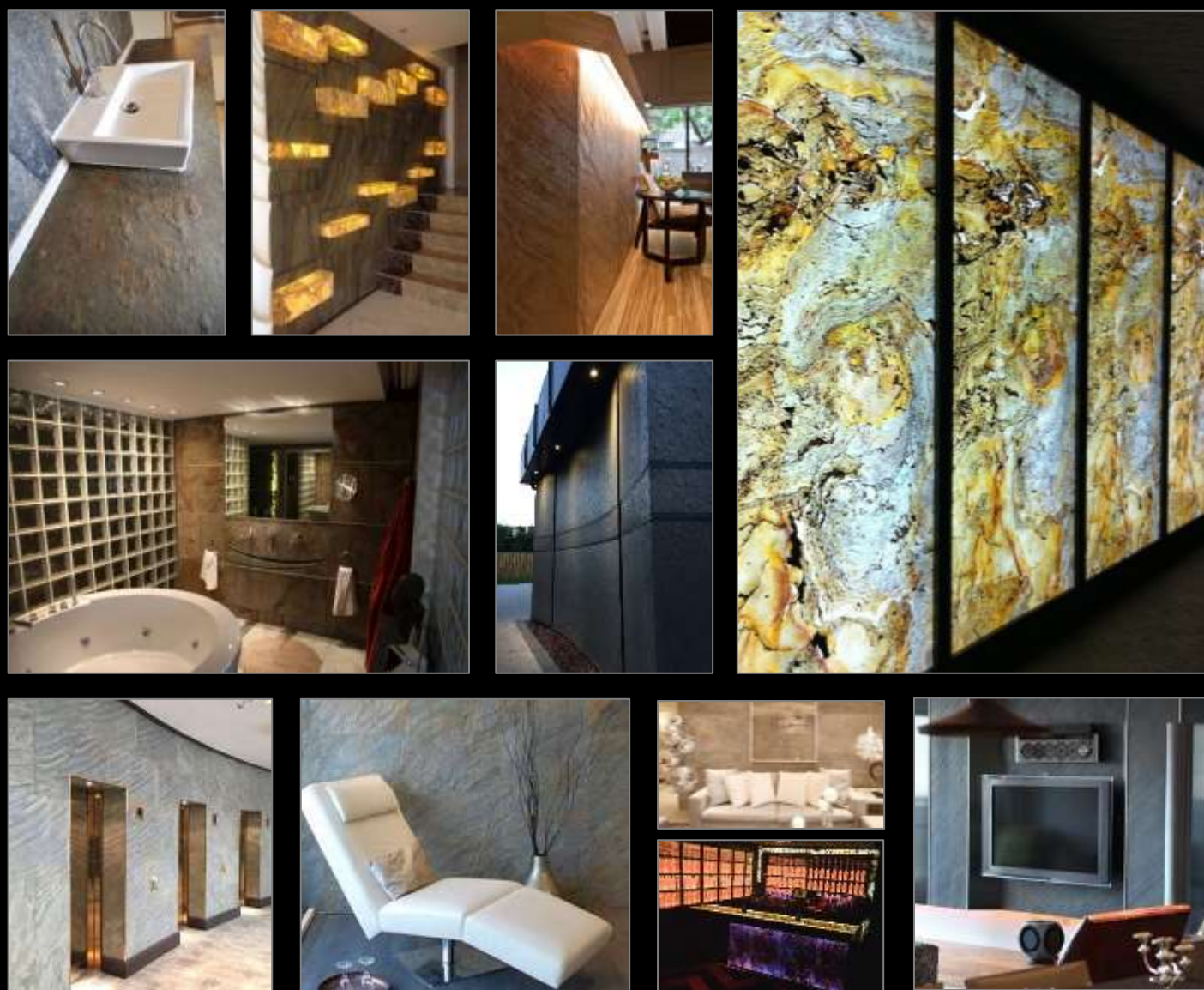
Rainforest Green



Marble

As this is a natural product, variations in colour will occur. Examples of the level of variations is shown on our classic colour range, however this is only an example of the potential variation. For full details of variations, visit www.slate-lite.com

The properties of real slate on the stone side combined with unbelievable flexibility and the light weight of the backing makes it possible to do the most amazing projects. Your imagination defines the limits of its application - furniture, wall or floor covering, splashbacks, counters etc.



SLATE|LITE™

TRANSLUCENT™

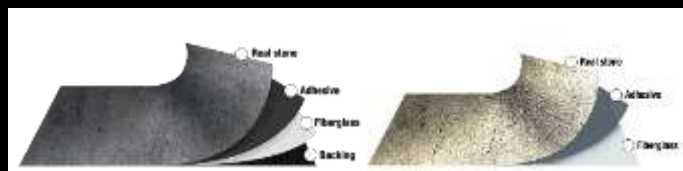
ECO|STONE™

Classic Slate Specification

- 100% natural stone surface
- Harder and stronger than stone tiles by reinforcing with polyester resin
- Thickness: 1.5 – 2.0 mm
- Weight: approx. 1.5 kg/m²
- Standard format: 1220 x 610mm & 2400 x 1200mm
- Size Accuracy: 1 - 2 mm in length and width
- Fire Rating EN13503: Floors Cfl-s1 (DIN 4102 – B1), enhanced rating available to C s3, d0
- Maximum Temperature 120 °C
- Abrasion class: PEI II: For areas with average traffic and low abrasion

Translucent Slate Specification

- 100% natural stone surface
- Harder and stronger than stone tiles by reinforcing with polyester resin
- Thickness: 1.5 – 2.0 mm
- Weight: approx. 1.5 kg/m²
- Standard format: 1220 x 610mm & 2400 x 1200mm
- Size accuracy: 1 - 2 mm in length and width



SIBU DESIGN is the leading manufacturer of high-quality, synthetic design panels that have been specially developed for interior architecture, furniture, shop fit outs, display design and fashion. SIBU is synonymous with precision, innovation, style and eye-catching fashionable patterns with first-class product finish.



- Manufacturing for over 30 years
- Over 300 patterns over 10 ranges
- Self-adhesive & non-adhesive option
- 1 - 2mm thickness, ideal for curved areas
- Abrasion-resistant options
- 100% PVC-free surfaces
- Manufactured in Austria
- Fire rated option available - B s2/3 d0 (EN13501) on selected products



With more than 300 stunning panel designs, SIBU decorative panels can offer a traditional, modern or contemporary finish to your product, project or design. Panels are normally supplied in 2.6m x 1m sheets with a factory-applied strong adhesive (SA) or plain non-adhesive (NA) backing ensuring ease of installation.





- Restaurants
- Hotels & Bars
- Fashion & Design
- Product Displays

- Feature Walls
- Counter Tops
- Reception Areas
- Shop Windows



For more information on the full range, visit www.sibu.at

- **Deco-Line (DM)**



Smooth, mirror, metallic & stone patterns are the ultimate finish for furniture, exhibitions, shop design, display & printing area. Abrasion-resistant surface is also available on selected finishes.

- **Punch-Line (PL)**



Perforated patterned sheets allow for a 3D effects. Punch Line gives a top look with a fashionable selection of colours and texture.

- **Leather-Line (LL)**



Synthetic leather surfaces in a wealth of textures including shimmering metallics. These unique designs are all 100% PVC-free.

- **Structure-Line (SL)**



Unmistakable texture combined with a range of colours help to a unique vintage or contemporary look to create that.

- **Wood-Line (WL)**



Combine nature with your design with our fashionable wood grain sheets. Finishes include charred wood, which will help you create a very special and coherent design concept.

- **Bath Art (BA)**



Designed specifically for bathrooms and wet rooms, these high gloss panels similar to Sibuglas can be used under running water.

To see the full range or for information on transport & storage, cutting & installation, visit www.sibu.at.

- **Translucent (TL)**



Add sparkle to any room with our translucent sheets. The recess in the sheets allow light through so are ideal for backlighting.

- **Multi-Style (MS)**



Stylistic mirror and metallic surfaces in a mosaic design. Extreme flexibility makes it ideal for display and decoration area.

- **Acrylic-Line (AC)**



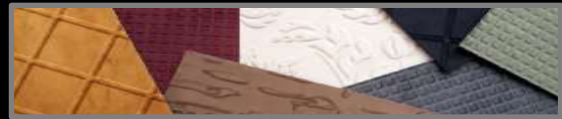
High gloss, abrasion resistant acrylic surface turns any piece of furniture into an absolute eye-catcher style icon. .

- **SibuGlas (SG)**



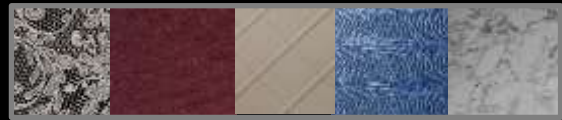
3mm highly polished acrylic sheets are Ideal for splashbacks, wardrobe doors and counter tops. While highly abrasion-resistant, if needed, it can be re-polished to restore its gloss appearance.

- **Fabric-Line (FL)**



Bring walls & furniture alive with our newest product. Available in vibrant colours & patterns, these velvet effect sheets will add warmth and softness to your project.

- **Antigrav (AG)**



Selected products from the entire range are available with a special backing so they can be butt jointed without the normal expansion gap.

Décor on a Roll is a real stone veneer which offers architects and designers the ability to interpret concrete in a whole new light. This innovative product allows you to recreate the appearance and feeling of the original surface material but using a 2mm thick light weight concrete veneer consisting of 96% stone.





Burnt Wood - 1093



Rust - 1078



Textured Concrete - 1200



Smooth Concrete - 1082



Different textures, patterns and colours are applied to give the appearance of stone, wood, rust and brick. This great versatile product can be used in so many different applications such as enhancing furniture or as a feature wall in bathrooms, kitchens, staircases and can be used both internally and externally.



Specification:

Roll Size: 3m x 1m
 Thickness: 2mm (approx.)
 Support: Glass fibre
 Flammability: A2, Smoke emission - S1, Droplets: d0
 Texture: Roughness Similar to Concrete

Recommended adhesive & Sealer:

Indoors: Murabond Sealed Surface Adhesive
 Wet Room / Worktops: Mapei VS90 / Uzin WK222

* Rust finish must be sealed, sealing of other finished is highly recommended to prevent staining.



Traditional wall and corner protection used in hotels and hospitals and hotels, while practical, also tend to be bland and utilitarian looking. Our exciting range of products are sleek and available in a wide range of bright colours, designed to enhance areas while still providing maximum protection. For lighter trafficked areas such as public corridors, canteens, offices and meeting rooms, we have a 2mm thick slim-line range of both wall and corner protectors provide a neat, colourful, and aesthetic solution.



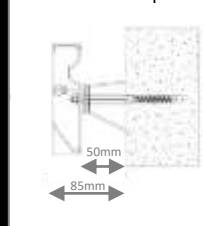
Our recently introduced a flexible wall protector is designed specifically for curved walls, bends and columns. Both the slim-line and the flexible wall protectors are easy to cut using basic tools and are available with a factory applied strong self adhesive tape for ease of installation.

Strong Wall Guard & Handrail System

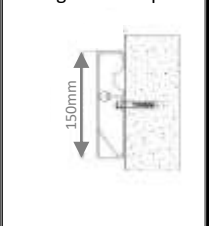
To compliment the colours in our slim-line range, our heavy duty handrail system can also be applied without spacers to act as a wall guard, both are ideal for hospitals, nursing homes and commercial offices.



Handrail with Spacer



Wall guard No Spacer



- Available in a wide range of colours
- Self adhesive fixing options
- Options for curved walls & pillars
- Design & cut service for sheet protectors
- Letters & bespoke logo's available
- Standard colours held by the manufacturer



Wall Protectors:



Handrail / Wall Guard
Size: 150mm x 35mm.
Length: 4m.
Material: PVC & Aluminium.



Slim-Line Wall Guard
Size: 110, 170, 220, 300mm & 600mm x 2.5mm.
Length: 4m.
Material: Vinyl Resin & Acrylic.



Elastic Wall Guard
Size: 110, 160, 210 & 310mm x 2mm.
Length: 1m to 25m Roll.
Material: TPE.



Stainless Steel Wall Guard
Size: 110, 170, 220 & 330mm x 1.0mm.
Length: 2 & 3m.
Material: Brushed Stainless Steel.

Corner Protectors:



Strengthened Corner.



Elastic Bumper Corner.



Slim-Design Corner



Stainless Steel Corner

Size: 70 x 70mm x 10mm.
Length: 1, 1.5, 2 & 3m.
Material: PVC & Aluminium.

Size: 56 x 56mm x 9mm.
Length: 1, 1.5, 2 & 3m.
Material: Elastic Rubber.

Size: 30 x 30, 50 x 50, 65 x 65, 25 x 50mm x 2mm.
Length: 1, 1.5, 2 & 3m.
Material: Acrylic & PVC.

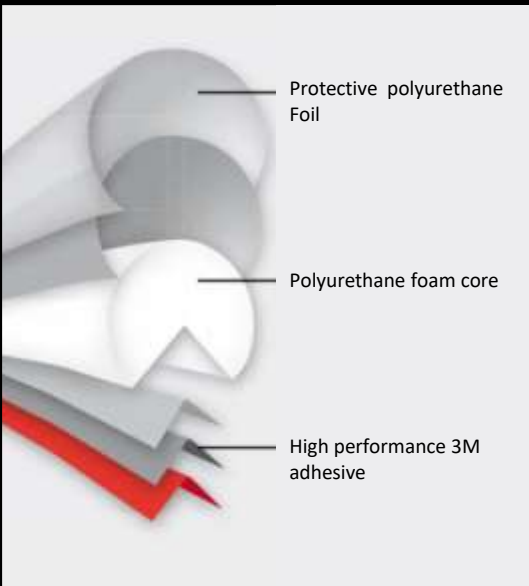
Size: 40 x 40, 65 x 65mm x 1mm.
Length: 1, 1.5, 2 & 3m.
Material: Brushed Stainless Steel.

Colour Range:

09 Snow White	10 White Ecrú	11** Vanilla Desert	12** Sand Sea	20 Yellow Sunny	21 Honey
22** Orange	23** Salmon	30** Pistachio	31 Lime	32 Turquoise	34** Medical Green
40 Grey-Blue	41 Lavender	42 Violet	43 Blue Ice	44 Bright Cornflower	45** Squally
46 Cairo Night	54 Pencil Graphite	55 Black	51** Morning Fog	52** Evening Mist	53** Lunar Grey
60 Beige	61 Latte	62 Cappuccino	64 Bitter Chocolate	63 Milky Chocolate	71 Bulls Blood

** indicates standard colours, other colours are subject to a minimum order quantity and may have a longer lead time.

Safety foam protection strips are available in a wide range of designs, colours and lengths to suit all applications. These flexible foam protectors are easy to cut and are supplied with a strong self adhesive tape as standard. While originally designed for industrial applications, with the new Design Colour Range, they are now ideal for commercial front of house applications especially in creating child friendly areas.

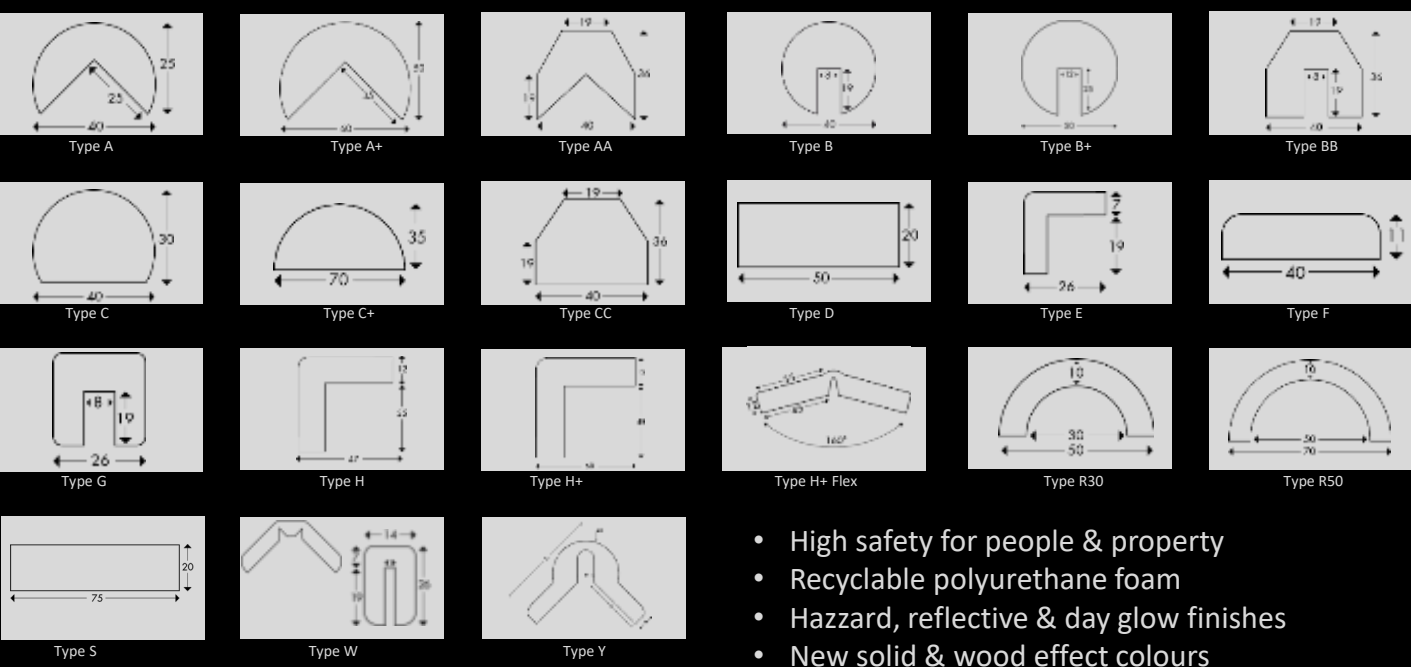


Woodgrain & New Vibrant Colours														
Type	Profile Details	Length	Silver	Wood Dark	Wood Khaki	Wood Cherry	Anthracite	Black	White	Wood Natural	Orange	Blue	Green	Red
Type A	40mm Dia - 3/4 Round	1 & 5m	👍	👍	👍	👍	👍	👍	👍	👍	👍	👍	👍	👍
Type E	Small Angle	1 & 5m	👍	👍	👍	👍	👍	👍	👍	👍	👍	👍	👍	👍
Type F	40mm Rectangle Wall Protector	1 & 5m	👍	👍	👍	👍	👍	👍	👍	👍	👍	👍	👍	👍
Type H	Medium Angle	1 & 5m	👍	👍	👍	👍	👍	👍	👍	👍	👍	👍	👍	👍
Type S	Rectangle Wall Protector	1m only	👍	👍	👍	👍	👍	👍	👍	👍	👍	👍	👍	👍



Type	Profile Details	Length									Fluorescent		Reflective	
			Yellow / Black	Red / White	White	Black	DayFluorescent	Glow in the Dark	Yellow / Black	Red / White	DayFluorescent	Glow in the Dark	Yellow / Black	Red / White
Type A	40mm Dia - 3/4 Round	1, 5 & 50m	👍	👍	👍	👍	👍	+++						
Type A+	62mm Dia - 3/4 Round	1m only	👍	👍	👍	👍	👍		👍	👍				
Type AA	36 x 41mm - Corner	1, 5 & 50m	👍	👍	👍	👍								
Type B	40mm Dia - Edge Protect 8mm Slot	1, 5 & 50m	👍	👍	👍	👍	👍	+++						
Type B+	50mm Dia - Edge Protect 12mm Slot	1m only	👍	👍	👍	👍	👍							
Type BB	Angled Edge Protector 6mm Slot	1, 5 & 50m	👍	👍	👍	👍								
Type C	40mm Round Wall Protector	1, 5 & 50m	👍	👍	👍	👍	👍	+++						
Type C+	70mm Round Wall Protector	1m only	👍	👍	👍	👍	👍		👍	👍				
Type CC	Angled Edge Protector	1, 5 & 50m	👍	👍	👍	👍								
Type D	Rectangle Wall Protector	1, 5 & 50m	👍	👍	👍	👍								
Type E	Small Angle	1, 5 & 50m	👍	👍	👍	👍	👍	+++						
Type F	40mm Rectangle Wall Protector	1, 5 & 50m	👍	👍	👍	👍	👍							
Type G	Square Edge Protector 8mm Slot		👍	👍	👍	👍								
Type H	Medium Angle	1, 5 & 50m	👍	👍	👍	👍	👍							
Type H+	Large Angle	1m only	👍	👍	👍	👍	👍		👍	👍				
Type H+	Flex Corner Protector Variable Angle	1m only	👍	👍	👍	👍	👍	(Neon Red)						
Type R30	50mm Dia - 30mm ID pipe protect	1, 5 & 50m	👍	👍	👍	👍								
Type R50	70mm Dia - 50mm ID pipe protect	1m only	👍	👍	👍	👍								
Type S	Rectangle Wall Protector	1m only	👍	👍	👍	👍	👍							
Type W	Edge Protector Wrap Around	1 & 5m	👍	👍	👍	👍	👍							
Type Y	Bumper Corner Protector	1 & 5m	👍			👍								

+++ Available as special order in 1m only



- Adhesive strength: 21 N/25 mm,
 - Temperature resistance: -40°C and +100°C
 - Self-adhesive glue onto a clean, grease-free surface
- High safety for people & property
 - Recyclable polyurethane foam
 - Hazzard, reflective & day glow finishes
 - New solid & wood effect colours
 - Colour fast technology
 - Easy to install
 - Fire rated – B2 (DIN 4102)

The entrance to your building gives visitors the first visual impression of your business, dust control mats not only keep the area dry and dirt free, but when combined with your company logo or brand they can create a powerful and lasting impression. Its vinyl backing ensures the mat doesn't slip on the floor covering, while the edging prevents the mat from becoming a trip hazard itself.

Typical indoor applications include, hotel & business lobbies, bars & restaurants, shops, department stores, supermarkets, schools, universities, hospitals & care homes.



Now for some facts! Well clean shoes will extend the lifespan of your floor covering. Over a 20 day period, 1,000 people will deposit nearly 11kg of dirt from their shoes when entering your building. 42% of a carpet's nap will be removed within 1.8m of the entrance after only 1,500 people come through the area. Finally wet and slippery floors are the biggest cause of insurance claims, therefore anything preventing slips or falls while keeping your customers and staff safe is always welcome.



- Medium foot traffic intensity.
- 7mm thick, 2.8kg / m², 100% polyamide 6.0 yarns.
- Mat sizes - 60 x 90cm, 90 x 120cm, 90 x 150cm, 120 x 180cm, & 120 x 240cm.
- Custom Roll Lengths per linear meter in 135, 150 & 200cm widths.



The front porch or lobby of your building gives your clients their first impression of what to expect from your company. With traditional dust control mats flipping up in the corners causing a trip hazard and natural coir matting compressing after time and looks worn, it's time for something new. Our *NoTrax*[®] rubber matting tiles is a modular system available plain or with a wide choice of carpet inserts. This allows quick and easy installation and can be easily redesigned to give a fresh look with minimal additional costs.



The 500 x 500mm tiles are suitable for both indoor & outdoor use and have a perimeter ramp available for loose lay applications. The tiles are available in 12 & 23mm thickness with fire retardant and oil resistant options making them ideal for placement at public buildings, petrol stations or entrances with oil exposure.

- Carpet tiles have a high absorption capacity
- Allows water to drain through, leaving a clean and dry surface
- Suitable for heavy foot traffic conditions in busy public areas, hospitality and commercial environments
- Scraping function removes dirt from soles to prevent dirt and grime from entering the building
- Smooth top surface or low profile and bevelled edges make NoTrax ideal for wheelchairs, trolleys and suitcase wheels



- The master flex system is available with 3 aperture sizes;
- 12mm thick - Small 14mm holes which complies with the European norm for public entrances.
 - 12mm thick - Heel Safe specifically designed for areas where high heels are expected.
 - 23mm thick - Large hole capable of draining large areas quickly.

To add variety to your entrance, highly absorbent carpet tiles are available in a wide range of colours.

- 103 - Standard Charcoal
- 113 - Stock Colours (8 colours)
- 380 - Swisslon Classic XT (5 colours)
- 388 - Swisslon Uni (7 colours)
- Custom Logo Carpet Tiles Available To Order



(103) Charcoal	(113) Charcoal	(113) Blue	(113) Brown	(113) Red	(113) Grey	(113) Natural
(113) Autumn Black	(113) Autumn Brown	(380) Cobalt	(380) Mocha	(380) Anthracite	(380) Slate Grey	(380) Granite
(388) Charcoal	(388) Red	(388) Taupe	(388) Black	(388) Grey	(388) Blue	(388) Brown

	Tile Size	Depth	Drainage Hole Dia	Plain Tile Reference	Carpet Tile Reference	Fire Rating EN 13501	Carper Insert Colour Range	Unit Price Exc Vat
Standard	500 x 500mm,	12mm	14mm	D592	C593	n/a	103, 380, 388	€ -
Nitrile (FR)	500 x 500mm,	12mm	14mm	D594	C595	Bfl S1	103, 380, 388	€ -
High Heel	500 x 500mm,	12mm	Closed	D692	C693	n/a	103, 380, 388	€ -
Nitrile (FR)	500 x 500mm,	12mm	Closed	D694	C695	Bfl S1	103, 380, 388	€ -
Large Aperture	500 x 500mm,	23mm	Large	D590	C591	n/a	113	€ -

Standard
C593

High Heel
C693

Large Aperture
C591

Perimeter Edge Ramp

"Spaghetti" vinyl open loop scrapes dirt and moisture off shoes trapping the dirt in the mat and preventing it from being tracked in to the building. This durable flexible material is ultra violet resistant, does not absorb water and due to it's backing also ensures minimum movement on the floor covering.



- 10mm Thickness, available in 4 colours
- Fire Rated EN 13501-1 Bfl-S1
- UV & Oil resistant
- Manufactured from PVC (DOP Free) with vinyl backing
- 120cm wide x 6m or 18m full rolls
- 120cm wide cut to length option
- Weight 3.8kg / m2
- R11 Anti-slip rating



Suitable for medium traffic, this matting can be inset into matwells or loose laid. For loose laid we recommend using our 4mm high vinyl bevelled edging to prevent the edges becoming a trip hazard. Typical applications include entrances of hotels, shops, department stores, schools, universities, restaurants & supermarkets. Easy to clean just vacuum clean or wash with a hose.



Charcoal



Brown



Green



Blue

Also available in 14mm unbacked and 16mm backed in a wider selection of colours for heavy duty and full outdoor applications.



Manufactured from recycled material, the ergonomic benefit derived from 9.4 mm thick worker platform comprised of a construction of microcellular vinyl consisting of millions of air bubbles, provide worker comfort and prevent fatigue. Supplied in mats, full rolls and custom roll lengths, all four edges are bevelled to minimise it being a trip hazard.

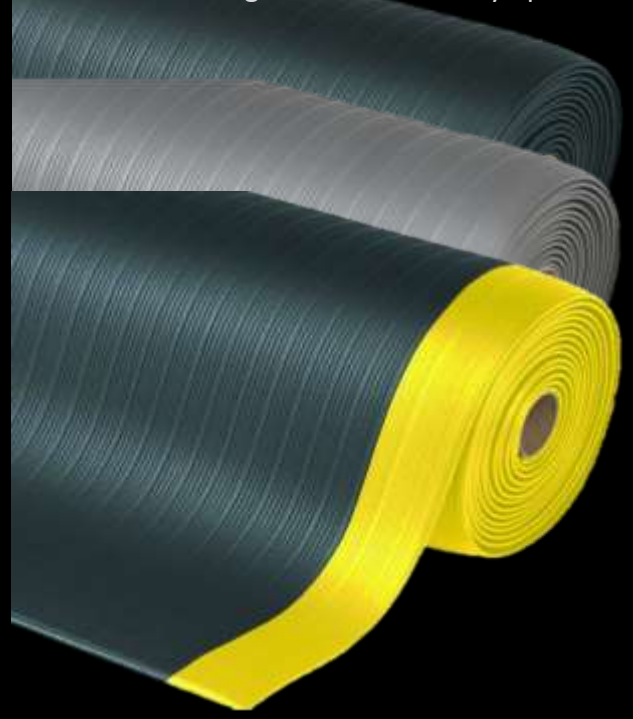


Typical applications include: manufacturing plants, assembly lines, picking and packing areas, logistic warehouse and individual work stations.

Pebble finish in Light or Medium duty options.



Ribbed finish in light or medium duty options



- All four sides are bevelled and sealed to minimize tripping hazards
- Slip resistance R10 according to DIN51130 and BG-rule BGR181
- Ribbed pattern enhances traction or Pebble for ease of cleaning



All four sides are bevelled and sealed to minimize tripping hazards. Slip resistance R10 according to DIN51130 and BG-rule BGR181. Airug ribbed enhances traction while Sof-Tred Pebble pattern provides non-directional traction and is also easy to clean while the.



Sof-Tred – 411 (Pebble Finish)

- Thickness: 9.4 mm
- Light duty
- Pebble pattern
- Available Colours: Black, Black & Yellow, Blue or Grey
- Mat sizes: 60cm x 91cm or 91cm x 150cm
- Roll Sizes: 60cm x 18.3m, 91cm x 18.3m & 122cm x 18.3m long
- Custom Roll Lengths per linear meter in 60cm, 91cm & 122 cm width.



Sof-Tred Plus - 409 (Pebble Finish)

- Thickness: 9.4 mm
- Medium duty
- Pebble pattern
- Available Colours: Black, Black & Yellow, or Grey
- Mat sizes: 60cm x 91cm or 91cm x 150cm
- Roll Sizes: 60cm x 18.3m, 91cm x 18.3m & 122cm x 18.3m long
- Custom Roll Lengths per linear meter in 60cm, 91cm & 122 cm width.



Airug – 410 (Ribbed Finish)

- Thickness: 9.4 mm
- Light duty
- Lengthwise ribbed pattern
- Available Colours: Black, Black & Yellow or Grey
- Mat sizes: 60cm x 91cm or 90cm x 150cm
- Roll Sizes: 60cm x 18.3m, 91cm x 18.3m & 122cm x 18.3m long
- Custom Roll Lengths per linear meter in 60cm, 91cm & 122 cm width.



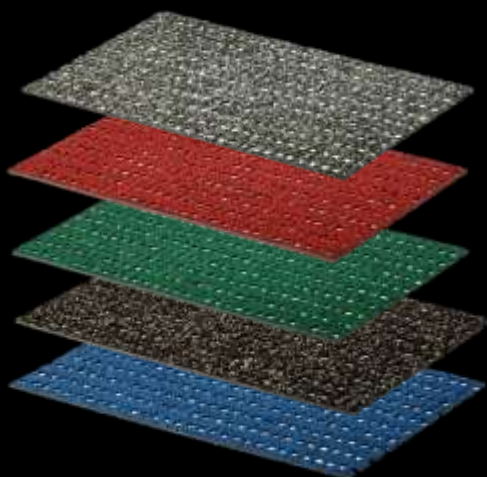
Airug Plus- 408 (Ribbed Finish)

- Thickness: 9.4 mm
- Medium duty
- Lengthwise ribbed pattern
- Available Colours: Black, Black & Yellow or Grey
- Mat sizes: 60cm x 91cm or 91cm x 150cm
- Roll Sizes: 60cm x 18.3m, 91cm x 18.3m & 122cm x 18.3m long
- Custom Roll Lengths per linear meter in 60cm, 91cm & 122 cm width.



While we don't get a lot of snow and ice in this country, the smallest covering is enough to stop public transport, close schools and businesses and can bring the country to a stop.

Our Walkway matting is designed to provide an anti-slip walkway or to cover the entire area. Due to its foam base layer, a thin layer of ice will crack under foot keeping you safely upright. The product can be power hosed to keep clean and is fire retardant. It is ideal for wet, frosty or icy conditions and is certified as R13 which is the highest slip resistant coverings available.



This light but tear resistant matting can be loose laid (self securing on areas over 3m²) or it can be glued, screwed, stapled or attached using a number of different profiles we stock. To complete the package, a stair mat with a reinforcing aluminium angle is available with a photo luminescent edge.



- Ideal for indoor & outdoor applications
- Cushioning allows anti-slip even with thin layer of ice
- Open structures allows for fast & effective drainage
- Anti-fatiguing cushioning
- UV & rot resistant, Fire retardant
- Easy to cut and install
- Pressure washer can be used for cleaning



Black



Terracotta



Blue



Red



Beige

Wet, frosty or icy timber decking becomes extremely slippery and is one of the biggest cause of injury and insurance claims. Cleaning and treating your decking to remove alga once or twice a year can be hard work and time consuming, however there is an easier solution - anti-slip insert strips. These strips are designed to be dropped and glued into the existing grooves in your deck, to give you an anti-slip walkway that will keep you safely on your feet, regardless of the Irish weather..



- Easy to fit, normally with adhesive only
- Can be drilled & screwed for high volume use
- Can be cut with hacksaw or metal cutting disc
- Fits most grooved decking profiles
- Elegant low profile design
- 1m long, Silver & grey powder coated finish
- Manufactured in Europe
- Surpasses European safety anti-slip tests
- Reduce the possibility of slips and the resulting insurance claims.
- PTV anti-slip score of 96 in dry & 72 in wet conditions.



For applications such as concrete & stone or where you want a wider strip, our rebated strip will solve your problem. Available in two widths, this strip is designed to be glued into the 6mm deep recess you have made. The 1.2m long strips are available in 12mm or 23mm widths in standard grey or black. As an alternative to the standard bauxite aggregate (5 year warranty), both strip systems are available as a special order in pigmented quarts (3 year warranty).



When it comes to marking out an area to provide privacy or shelter, our modular dividers are a perfect solution. Available in four attractive colours, our high quality powder coated aluminium modular system can be easily rearranged allowing design flexibility.



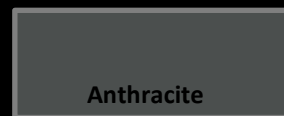
- Plain screen or with planter
- Canvas with clear panel or high quality Metacrylate clear acrylic.
- Two sizes 140 x 180cm or 140 x 101cm (h x w)
- Powder coated in Anthracite, White or Taupe



White



Taupe



Anthracite



Clear Acrylic Screen Range



Plain
140 x 101cm



Plain
140 x 180cm



Single Planter
140 x 101cm x 38cm



Double Planter
140 x 180cm x 38cm

Canvas Screen Range



Plain
140 x 101cm



Plain
140 x 180cm



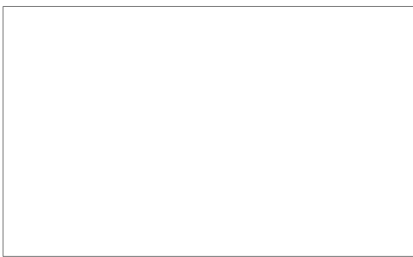
Single Planter
140 x 101cm x 38cm



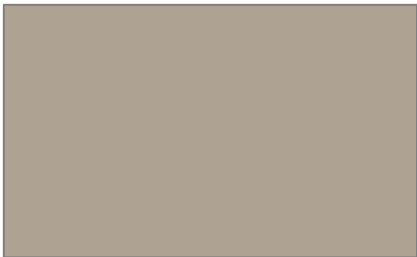
Double Planter
140 x 180cm x 38cm



Anthracite



White



Taupe





Funky Colour Range



Midnight Black



Mellow Yellow



Chilli Red



Hot Pink



Lime Time



Irish Lavender



Azure Blue



Purple Rain



Chestnut Brown



Plum Red

Earth Colours

Manufactured in Ireland, our range of recycled rubber landscaping products upcycles old car & truck tyres, creating a range of products for commercial & residential projects. Our rubber chippings & Mats are used extensively in playgrounds as an alternative to bark mulch & slabs, while our kerbs and edging add the extra bit of safety as an alternative to hard concrete.



- Rubber mulch chippings.
- 20mm patio mats

- 35mm walkway mats
- 50 & 100cm tree protection rings

- Lawn Edging
- Heavy Duty Kerbs



- Manufactured in Ireland from recycled car & truck tyres
- Long lasting replacement for bark mulch
- Ideal for play areas and landscaping
- Easy to install and maintain
- Coverage: 10kg = 1m² at 25mm cover
- Available in 20kg handy bags
- Bulk 500 & 1,000kg direct delivery only



Black

Grey

Brown

Red

Green

Blue

Artificial hedge screening can add colour, texture and atmosphere to your project. Traditionally used for residential projects, it is increasingly being used for commercial applications such as artificial living walls in beer gardens, reception areas, health centres and restaurants.

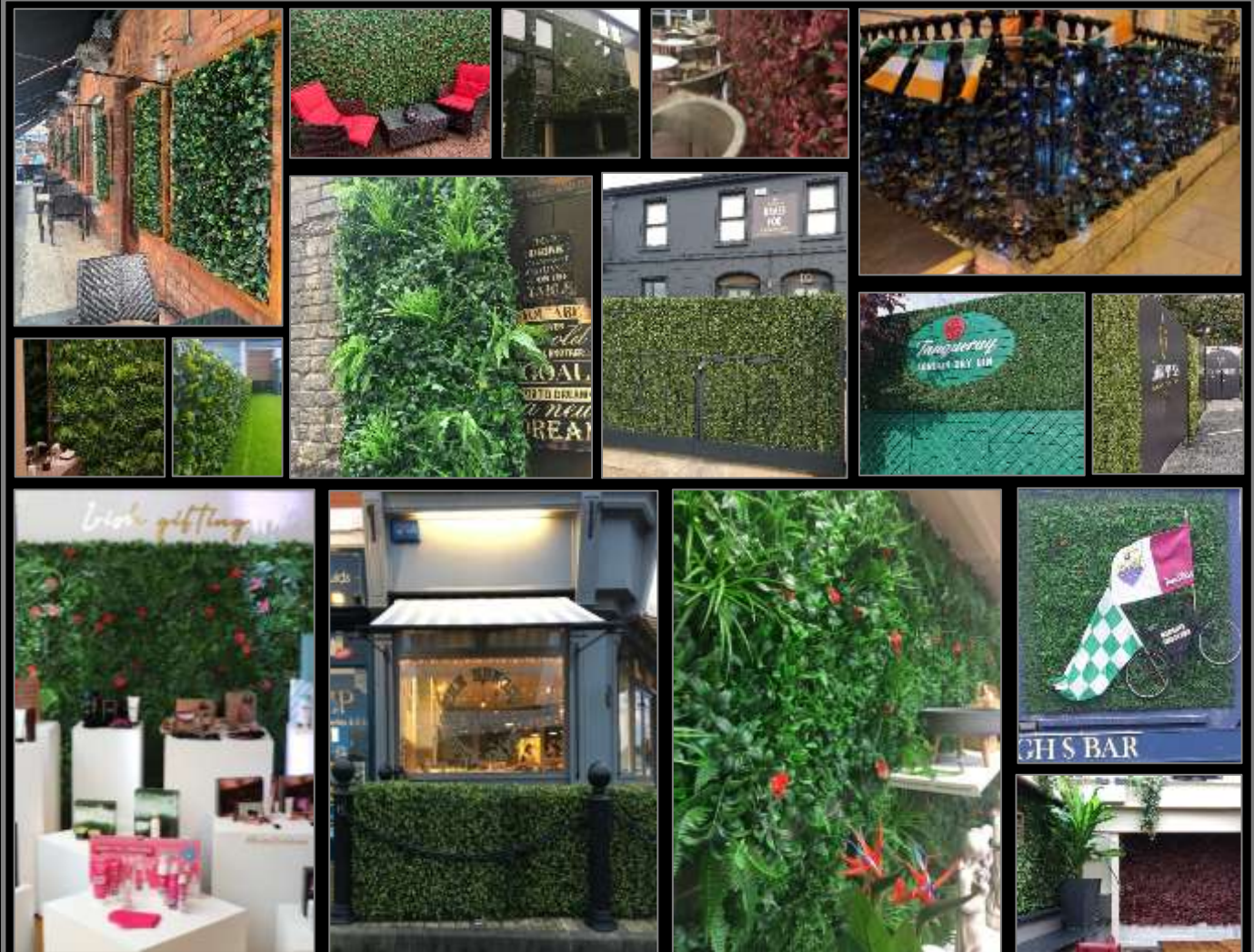
Our box hedge panels have been used extensively for exhibition fit-outs and also as an external wall covering.



- Easy & quick to install
- UV stabilized
- Suitable for outdoor use
- Hides unsightly areas
- Weatherproof
- 4 styles – 3m x 1m Roll, 1m x 1m Panel, 2m x 1m expanding trellis (PVC or real willow wood)



No Watering - No Maintenance - No Waiting - No Problem!



Our indoor & outdoor wall screenings can be used as a divider to partition an area, with a planter to act as decorative trellis or as a piece of art on the wall of your room or garden. The screens come in two sizes 60 x 120cm & 90 x 180cm. All screens are available in black composite wood, black powder coated steel or core-ten steel (rust) finish and come in 5 modern & classical designs.



Our metal screens (powder coated & core-ten) are laser cut incorporating a frameless design which allows multiple screens to be joined seamlessly to form larger screens.

The weatherproof wood composite screens have a framed edge which can be screwed into to fix the panels to a wall. Due to the lightweight nature of the material, they can be easily cut with standard tools if needed.



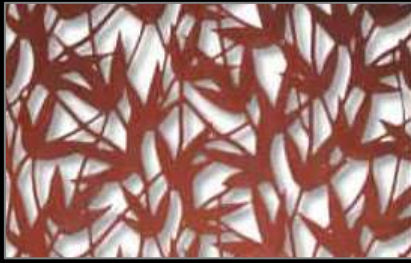
- 2 sizes: 90 x 180cm & 60 x 120cm
- 3 material finishes: powder coated steel, core-ten steel (rust) & wood composite.
- 5 Designs
- UV resistant powder coating with 10 year warranty
- Metal screens supplied with brackets for secret fixing
- Steel screens are frameless allowing for seamless joints of multiple units

Metal screens (powder coated & core-ten) are laser cut incorporating a frameless design which allows multiple screens to be joined seamlessly to form larger screens.

The weatherproof wood composite screens have a framed edge which can be screwed into to fix the panels to a wall. Due to the nature of the material, they can be easily cut with standard tools if needed.



Frameless powder coated steel



Frameless core-ten steel



Framed composite wood

Five modern & traditional designs available in two sizes 60 x 120cm or 90 x 180cm.



Labyrinth



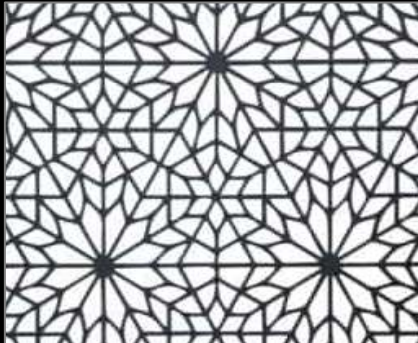
Bamboo



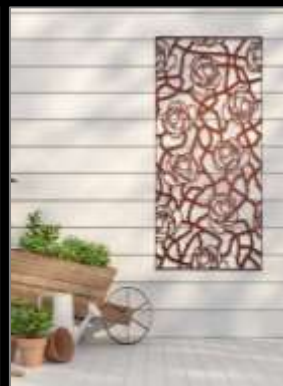
Entangled rose



Hive



Ria



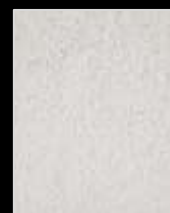
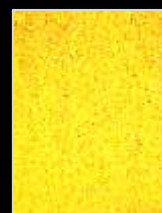
In addition to our standard 20mm – 40mm range of outdoor landscape artificial grass, we supply display grass including our budget Snow White grass. Available in 2m & 4m wide rolls, we cut to your specific length.



For children's play areas, health clubs, leisure centre & gyms, our 12mm premium coloured grass is an ideal floor covering. This tight knit yarn is available in 6 colours and is suitable for indoor and outdoor use.

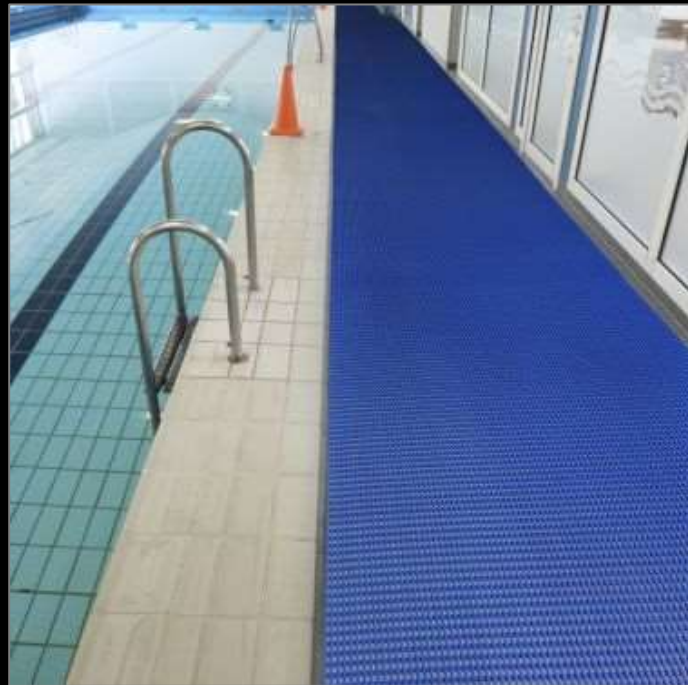


- Leisure, Landscaping, Sports & Fitness Applications
- UV Stabilised
- Water Permeable: 60l / min / 100cm²
- Fire Rating: Efl-s1 with no sand infill
Cfl-s1 with 5mm sand inlay
- 12mm height in 6 bright colours
- Roll size 2m x 25.2m (supplied in full rolls only)



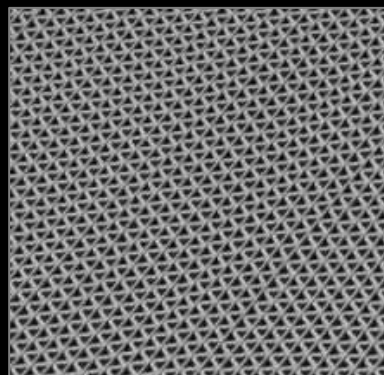
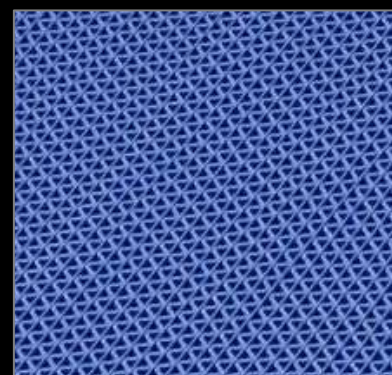
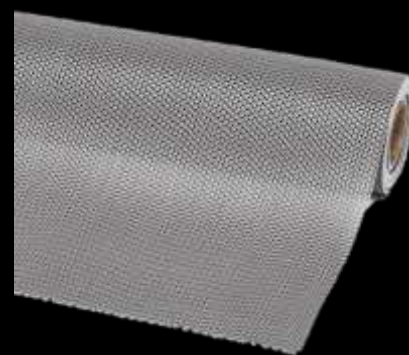
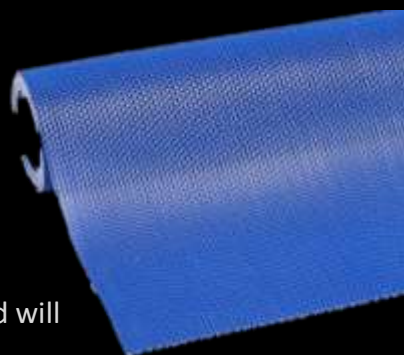
Our durable and hygienic mat rolls – (538 or 535) creates a healthy and safe environment in wet room for bare feet. The unique design affords not only instant drainage and slip resistance, it also prevents the growth of micro-organisms which can cause skin diseases such as athlete's foot and tinea.

Anti-microbial treated polyethylene prevents growth of fungi or bacteria and promotes hygiene in wet areas such as locker rooms, swimming pools, saunas, and showers.



Pleasantly soft and warm under bare feet. Open structure for easy draining of water, soap, shampoo and lotions where dependable sure footing is essential. The wave design creates a slip-resistant yet comfortable walking surface for bare feet.

- R10 anti-slip rating
- Wave top surface
- Anti-bacterially treated vinyl
- Easy to install and relocate.
- Easy to clean and requires little maintenance.
- Suitable for light / medium duty use and will not flatten over time.



- Blue or Grey colour
- 91 & 122cm wide x 12.2m long rolls
- Overall thickness: 5.3 mm.
- Weight: 3.6 kg per m2.
- Free of DOP, DMF, Silicone, and heavy metals.

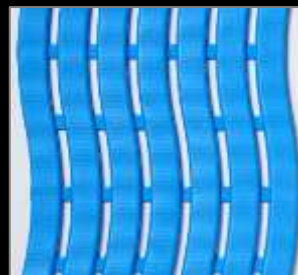


Our durable and hygienic mat rolls – (535 or 538) creates a healthy and safe environment in wet rooms for bare feet. The unique design affords not only instant drainage and slip resistance, it also prevents the growth of micro-organisms which can cause skin diseases such as athlete's foot and tinea.

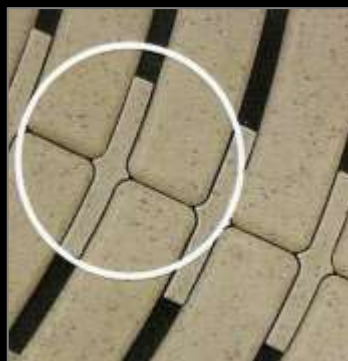
Anti-microbial treated polyethylene prevents growth of fungi or bacteria and promotes hygiene in wet areas such as locker rooms, swimming pools, saunas, and showers.



- White, Cream & Blue colours
- 60cm wide x 15m long roll
- Overall thickness: 9 mm.
- Weight: 4.3 kg per m².
- Free of DOP, DMF, Silicone, and heavy metals.



Pleasantly soft and warm under bare feet. Open structure for easy draining of water, soap, shampoo and lotions where dependable sure footing is essential. The wave design creates a slip-resistant yet comfortable walking surface for bare feet.



- Superb Drainage
- Anti-Microbial
- Connects Side by Side
- Light duty UV resistant antibacterial polyethylene wave matting
- Optional clips to connect side-by-side.



Fire Ratings

European fire testing is standardized through the use of EN 13501-1, however some countries may have had products tested to older national standards, of which the most common are the British BS476, German DIN 4102 and the French NF P92-507. Products tested under EN13501-1 are given a fire rating based on 3 criteria, the grade, the smoke propagation and flaming droplets and are presented such as “B - s1, d1”

Definition	Grade	Smoke Propagation	Flaming Droplets
Non-Combustible Materials	A1		
	A2	s1 and all other variations	d0
Combustible Materials: Very little contribution to fire	B	s1 and all other variations	d0
Combustible Materials: Limited contribution to fire	C	s1 and all other variations	d0
Combustible Materials: Medium contribution to fire	D	s1 and all other variations	d0
Combustible Materials: High contribution to fire	E	E-d2	
Combustible Materials: Easily Flamible	F		

Smoke & Droplet classes:

- s1 = No smoke
- s2 = Limited smoke
- s3 = Substantial smoke
- d0 = None
- d1 = Some
- d2 = Quite a lot

Materials designed as floor coverings are usually just categorised under two classification, the grade and smoke class and generally has “fl” after the grade such as “Bfl– s2”

Classification comparison chart

Euroclass EN13501-1	<u>German</u> DIN 4120-1 No Smoke No Droplets			Euroclass EN13501-1	<u>UK</u> BS 476/6 & 7	Euroclass EN13501-1	<u>France</u> NF P92-507
A1	A1	✓	✓	A1	Non Combustable	A1	Non Combustable
A2 - s1, d0	A2	✓	✓	A2 - s1/s2/s3, d0/d1	Limited Combustable	A2 - s1, d0	M0
B/C - s1, d0	B1	✓	✓	B - s1/s2/s3, d0/d1/d2	Class 0	A2 - s1/s2/s3, d0/d1	M1
A2/B/C - s2/s3, d0		✓	✓	C - s1/s2/s3, d0/d1/d2	Class 1	C- s1/s2/s3, d0,d1	M2
A2/B/C - s1, d0/d1							
A2/B/C - s3, d2							
D - s1/s2/s3, d0	B2		✓	D - s1/s2/s3, d0/d1/d2	Class 2	D - s1/s2/s3, d0/d1	M2
D - s1/s2/s3, d1/d2			D - s1/s2/s3, d0,d1	M4 (No droplets)			
E			E	Class 3	E	M4	
			E - d2				
F	B3			F		F	

While every very care has been taken to confirm the information above is correct and accurate, you should always consult with your fire officer or consultant before ordering or installing any product that requires to be fire rated to confirm its suitability for your specific application.

General information

Most of the icons used in our literature are explained below, some suppliers insist on using their own icons, however generally they are fairly self explanatory.

	Anti Slip		Cold Resistant		Indoors Use
	Anti Fatigue		Fire Retardant		Covered Outdoor Area
	Light Traffic		Power Hose Suitable		Outdoors Use
	Medium Traffic		Washable		Wheel & Castor Friendly
	Heavy Traffic		Absorbant		Wheelchair Friendly
	High Heel Suitable		Protection		Stairs Suitable
	Dirt Scraping		Drainage		Easy to Cut
	Barefoot Suitable		Insulation		
	Modular System		Oil & Grease Resistant		